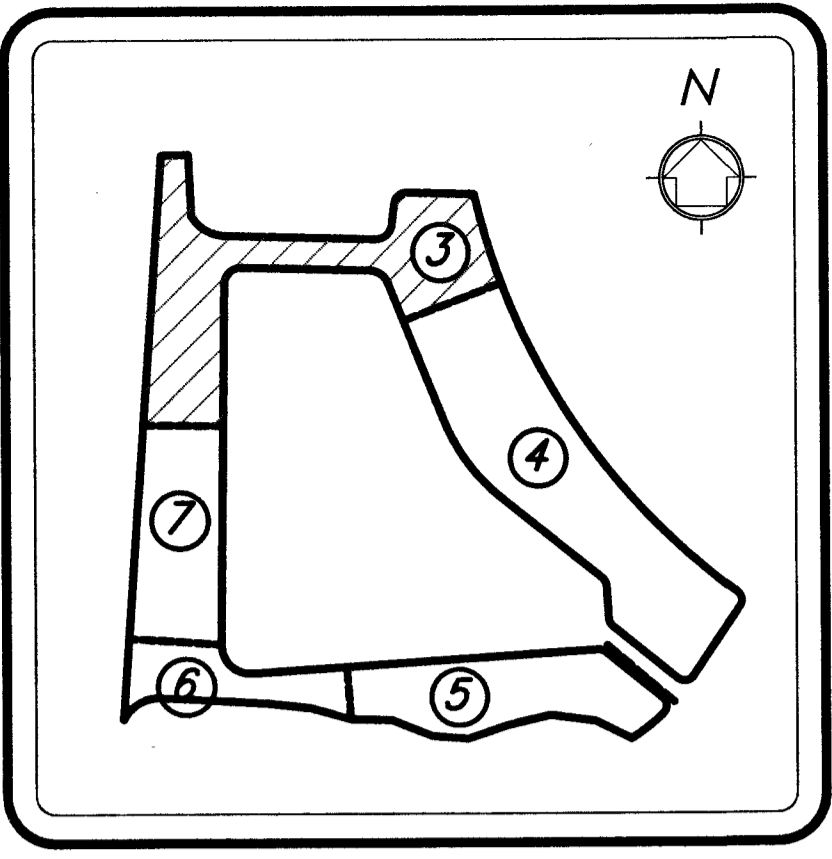


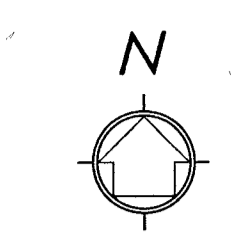
# BOCA DEL MAR PUD - COPPER COVE AT MIZNER VILLAGE

BEING A REPLAT OF A PORTION OF TRACT 64 D AND 69 A, BOCA DEL MAR NO. 7 PUD, PLAT BOOK 30, PAGES 210 THROUGH 217 INCLUSIVE OF THE PUBLIC RECORDS, PALM BEACH COUNTY, FLORIDA. LYING AND SITUATE IN SECTION 26 & 27, TOWNSHIP 47 SOUTH, RANGE 42 EAST, PALM BEACH COUNTY, FLORIDA.

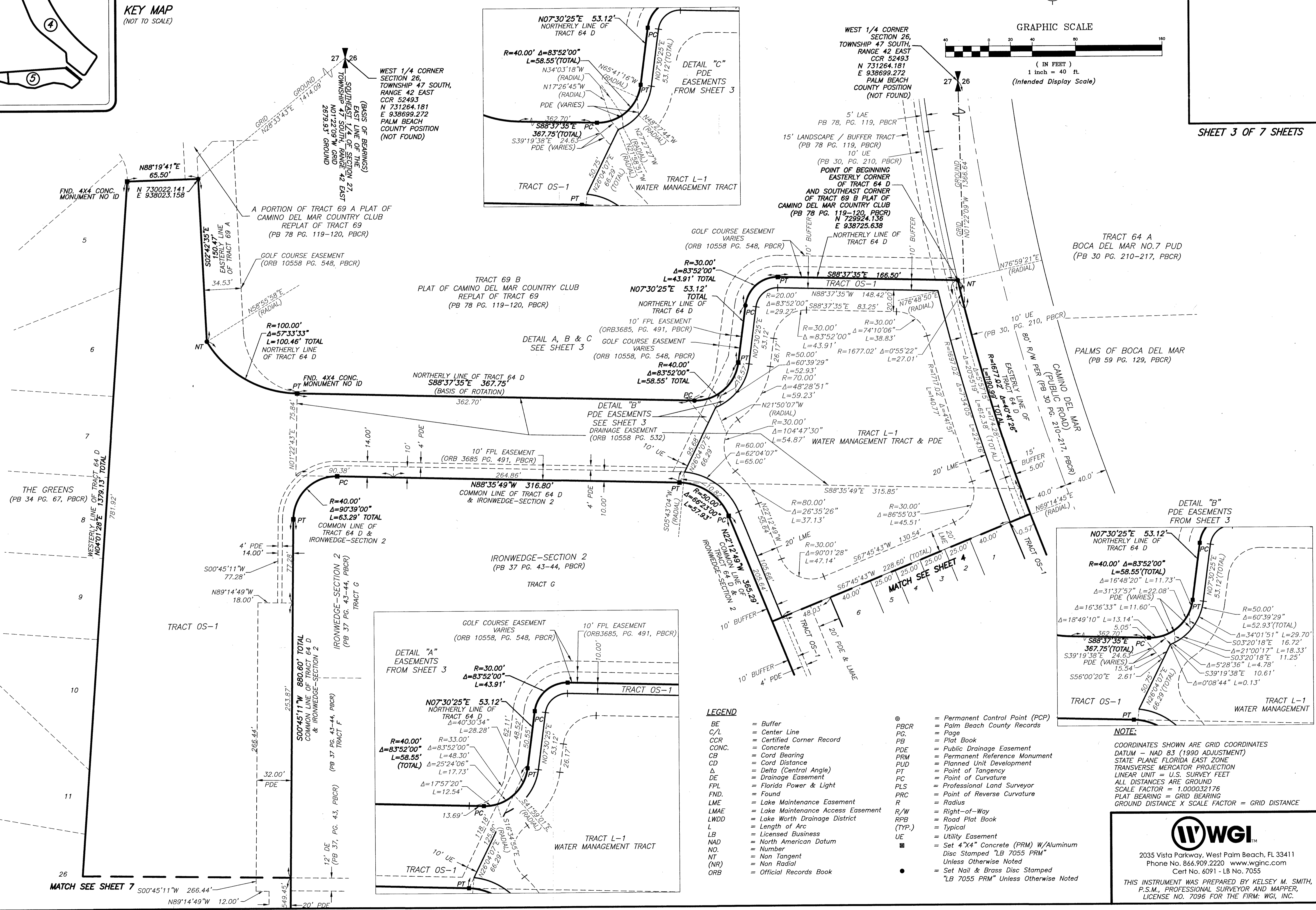
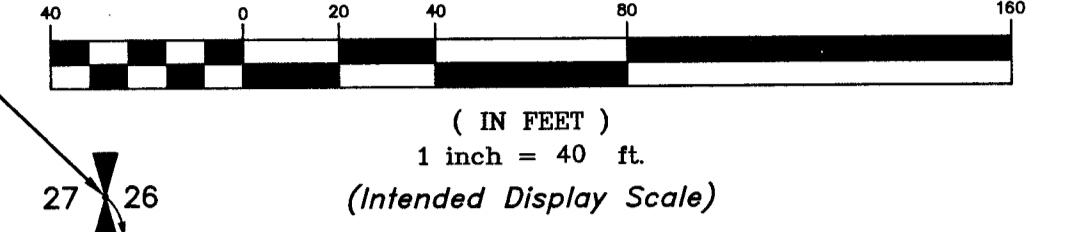
3  
SHEET 3 OF 7 SHEETS



KEY MAP (NOT TO SCALE)



GRAPHIC SCALE



FND. 4X4 CONC. MONUMENT NO. ID  
N 730022.141  
E 938023.158

A PORTION OF TRACT 69 A PLAT OF CAMINO DEL MAR COUNTRY CLUB REPLAT OF TRACT 69 (PB 78 PG. 119-120, PBCR)  
GOLF COURSE EASEMENT (ORB 10558 PG. 548, PBCR)  
R=100.00' Δ=57°33'33" L=100.46' TOTAL NORTHERLY LINE OF TRACT 64 D

TRACT 69 B PLAT OF CAMINO DEL MAR COUNTRY CLUB REPLAT OF TRACT 69 (PB 78 PG. 119-120, PBCR)

NORTHERLY LINE OF TRACT 64 D S88°37'35"E 367.75' (BASIS OF ROTATION)

COMMON LINE OF TRACT 64 D & IRONWEDGE-SECTION 2 N88°35'49"W 316.80'

COMMON LINE OF TRACT 64 D & IRONWEDGE-SECTION 2 R=40.00' Δ=90°39'00" L=63.29' TOTAL

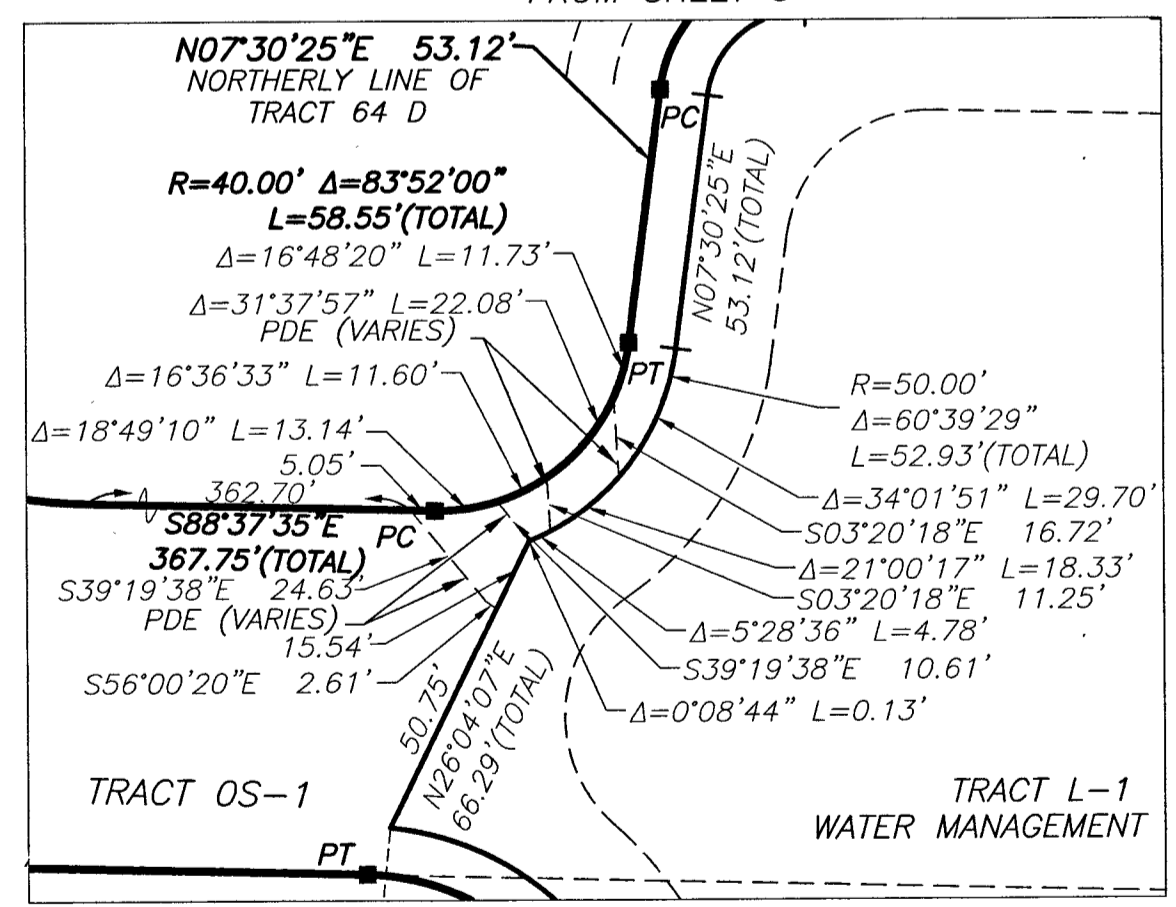
IRONWEDGE-SECTION 2 (PB 37 PG. 43-44, PBCR)

NORTHERLY LINE OF TRACT 64 D Δ=40°30'34" L=28.28'

R=40.00' Δ=83°52'00" L=58.55' (TOTAL)

### LEGEND

- BE = Buffer
- C/L = Center Line
- CCR = Certified Corner Record
- CONC. = Concrete
- CB = Cord Bearing
- CD = Cord Distance
- Δ = Delta (Central Angle)
- DE = Drainage Easement
- FPL = Florida Power & Light
- FND. = Found
- LME = Lake Maintenance Easement
- LMAE = Lake Maintenance Access Easement
- LWDD = Lake Worth Drainage District
- L = Length of Arc
- LB = Licensed Business
- NAD = North American Datum
- NO. = Number
- NT = Non Tangent
- (NR) = Non Radial
- ORB = Official Records Book
- PBCR = Palm Beach County Records
- PG. = Page
- PB. = Plat Book
- PDE = Public Drainage Easement
- PRM = Permanent Reference Monument
- PUD = Planned Unit Development
- PT = Point of Tangency
- PC = Point of Curvature
- PLS = Professional Land Surveyor
- PRC = Point of Reverse Curvature
- R = Radius
- R/W = Right-of-Way
- RBP = Road Plat Book
- (TYP.) = Typical
- UE = Utility Easement
- = Set 4"x4" Concrete (PRM) W/Aluminum Disc Stamped "LB 7055 PRM" Unless Otherwise Noted
- = Set Nail & Brass Disc Stamped "LB 7055 PRM" Unless Otherwise Noted



NOTE: COORDINATES SHOWN ARE GRID COORDINATES DATUM - NAD 83 (1990 ADJUSTMENT) STATE PLANE FLORIDA EAST ZONE TRANSVERSE MERCATOR PROJECTION LINEAR UNIT = U.S. SURVEY FEET ALL DISTANCES ARE GROUND SCALE FACTOR = 1.000032176 PLAT BEARING = GRID BEARING GROUND DISTANCE X SCALE FACTOR = GRID DISTANCE



2035 Vista Parkway, West Palm Beach, FL 33411  
Phone No. 866.909.2220 www.wginc.com  
Cert No. 6091 - LB No. 7055  
THIS INSTRUMENT WAS PREPARED BY KELSEY M. SMITH, P.S.M., PROFESSIONAL SURVEYOR AND MAPPER, LICENSE NO. 7096 FOR THE FIRM: WGI, INC.